



A QUALICO Company

# Award Winning

## Elevation A

Illustrations are artist concepts and may vary.



2 Storey

3 Bedrooms

2 ½ Bathrooms

2140 sq. ft.

## 980 Plan

- Spacious great room with 9' cantilever, 9' ceilings, main floor office, and open kitchen layout with island/breakfast bar
- Walk-in closet off mud room for added storage and main floor office
- Large master bedroom with ensuite and walk-in closet; second floor family room
- Open ceiling in foyer with display shelf
- Optional lower level development plan
- 20' x 20' standard sized garage with extension for workshop/storage area
- Many other details, features, and options available

# THE NEWBURY

(b-rev1-8-25)



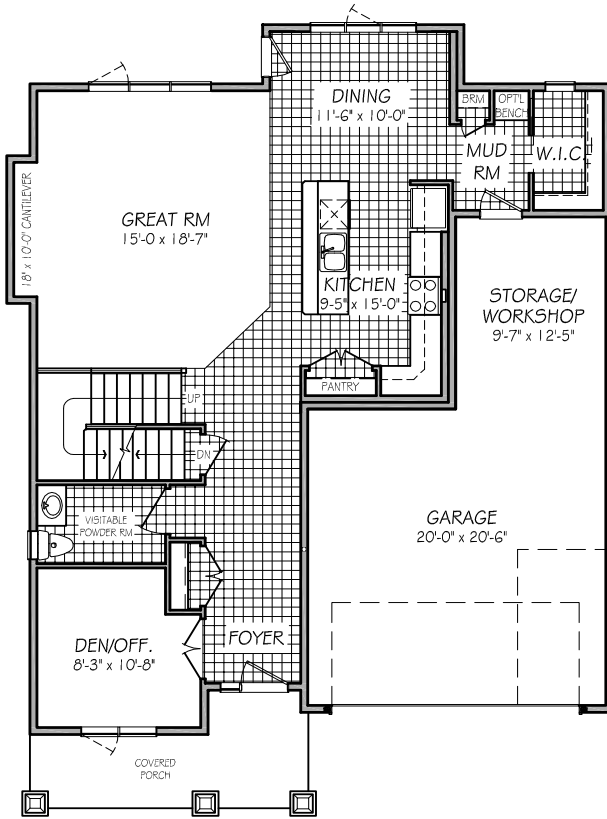
A QUALICO Company

Award Winning

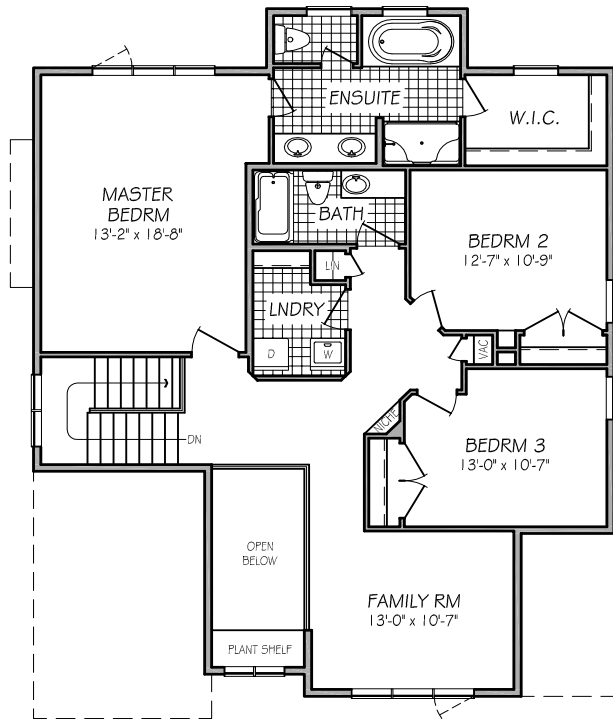
# The NEWBURY

## 980 Floor Plan

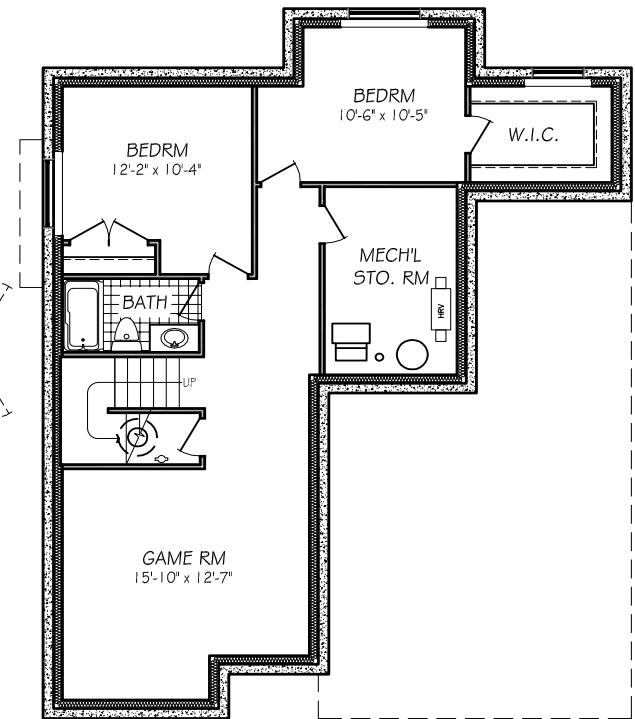
(b-rev1-8-25)



MAIN FLOOR PLAN  
1138 SQ. FT.



SECOND FLOOR PLAN  
1313 SQ. FT.



OPT'L BASEMENT PLAN  
827 SQ. FT.

All illustrations are artist's conception and may vary. Room dimensions are approximate. Windows and room sizes may vary with elevations. Mechanical equipment location and placement subject to change as required by building code and at discretion of builder. Furniture outlines for purpose of visualizing room layout only, furniture not included. Kensington Homes reserves the right to change material or specifications without notice.